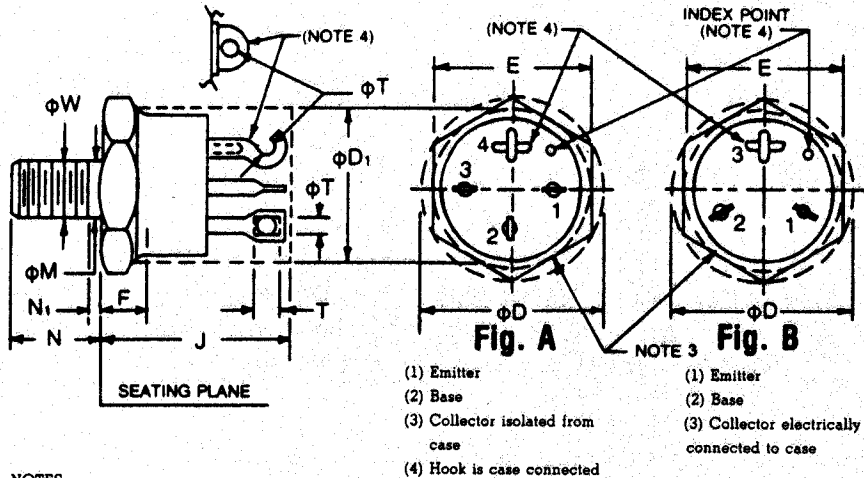


TO-111 AND TO-111/1



NOTES:

1. DEVICE BODY AND TERMINALS (WITH EXCEPTION OF HEXAGON) LIE WITHIN THE CYLINDER DIAMETER ϕD_1 AND LENGTH J .
2. POSITION OF TERMINALS IN RELATION TO THE HEXAGON IS NOT CONTROLLED.
3. FOUR TERMINALS OMISSION OF A MAXIMUM OF ONE TERMINAL IS OPTIONAL. POSITION OF THE TERMINAL IS OPTIONAL. THE NUMBER AND POSITION OF TERMINALS ACTUALLY PRESENT ARE INDICATED IN THE PRODUCT REGISTRATION.
4. THE USE OF EITHER A HOOK, SHORT TAB, OR TALL TAB TERMINAL CONTOUR IS OPTIONAL. AN INDEX POINT IS REQUIRED WHEN THE TALL TAB TERMINAL CONTOUR (IDENTICAL TO THE ADJACENT TERMINALS) OPTION IS USED.

SYMBOL	DIMENSIONS				NOTES
	INCHES		MILLIMETERS		
	MIN.	MAX.	MIN.	MAX.	
ϕD		0.505		12.82	
ϕD_1	0.330	0.423	8.39	10.74	1
E	0.423	0.438	10.75	11.12	2
F	0.090	0.250	2.3	6.3	5
J	0.570	0.763	14.5	19.3	1
ϕM	0.155	0.189	3.94	4.80	6
N	0.400	0.455	10.16	11.55	
N_1		0.078		1.98	6
ϕT	0.040	0.070	1.02	1.77	
T		0.090		2.28	7
ϕW	0.1658	0.1697	4.212	4.310	8

5. A CHAMFER (OR UNDERCUT) ON ONE OR BOTH ENDS OF HEXAGONAL PORTION IS OPTIONAL.
6. INCOMPLETE OR UNDERCUT THREADS.
7. ELONGATED HOLD IN TAB IS OPTIONAL.
8. PITCH DIAMETER OF 10-32 UNF-2A COATED THREADS (ASA B1.1-1960).