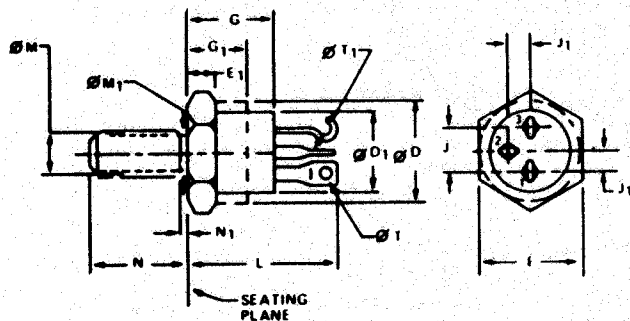


# TO-63



## NOTES:

1. CHAMFER OR UNDERCUT ON ONE OR BOTH ENDS OF HEXAGONAL PORTION IS OPTIONAL.
2. PACKAGE CONTOUR WITH THE EXCEPTION OF THE HEXAGON IS OPTIONAL WITHIN DIMENSIONS SPECIFIED.
3. PITCH DIAMETER 5/16 24 UNF-2A (COATED) 0.2854 (7.25 MM).
4. THIS TERMINAL CAN BE FLATTENED AND PIERCED OR HOOK TYPE.
5. POSITION OF LEADS IN RELATION TO THE HEXAGON IS NOT CONTROLLED.
6. LENGTH OF INCOMPLETE OR UNDERCUT THREADS OF  $\phi M_1$ .
7. CONTROLLING DIMENSIONS: INCH.

- (1) Emitter
- (2) Base
- (3) Collector electrically connected to case

SYMBOL	DIMENSIONS				NOTES
	INCHES		MILLIMETERS		
	MIN.	MAX.	MIN.	MAX.	
$\phi D$	0.775	0.875	19.69	22.22	2
$\phi D_1$	0.745	0.775	18.93	19.68	
E	0.885	0.875	21.52	22.22	
$E_1$	0.090	0.167	2.29	4.24	1
G	0.480	0.535	12.20	13.58	
$G_1$		0.300		7.62	2
$J_1$	0.240	0.260	6.10	6.60	5
J	0.485	0.515	12.32	13.08	5
L	0.937	1.030	23.80	26.16	
$\phi M$	0.2806	0.2854			3
$\phi M_1$	0.278	0.312	7.07	7.92	
N	0.460	0.495	11.69	12.57	
$N_1$		0.105		2.66	6
$\phi T$	0.060	0.105	1.53	2.66	
$\phi T_1$	0.060	0.105	1.53	2.66	4
NOTE	7		7		